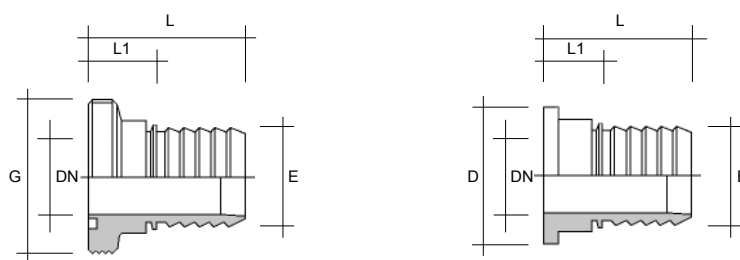


SMS SCHLAUCH VERSCHRAUBUNG SMS 1145
SMS HOSE COUPLING *Swedish Manufacturing Standard*
 Sicherungsbundstutzen geschuppt / *serrated hose shank with collar* EN14420-2 (DIN 2817)

- EIGENSCHAFTEN** Spaltfreier Übergang vom Schlauch zur Armatur
 Höchstmaß an Hygiene mit Presshülsen-Einband
 bestens für CIP-/SIP-Reinigung geeignet
 geringe Querschnittsänderung
 Stutzenarmaturen wiederverwendbar
- OBERFLÄCHEN** Ra < 0,8/1,6 µm innen/außen = Hygieneklasse H3
- BETRIEBSDRUCK** 2,5 MPa (25 bar) 1" - 4"
- EINBAND** Preßhülse, Sicherheitsklemmschalen
- DICHTUNG** SMS Dichtring
- FEATURES** *Seamless fitting from tube to hose shank
 maximum hygiene by assembling with swage ferrules
 most suitable for CIP-/SIP-cleaning
 low change of cross section
 coupling reusable*
- SURFACES** Ra < 0,8/1,6 µm internal/external = hygienic class H3
- WORKING PRESSURE** 2,5 MPa (25 bar) 1" - 4"
- ASSEMBLING** Swage ferrule, safety clamps
- GASKET** SMS joint ring



Bund-Schlauchstutzen
 mit Nutmutter
male coupling with nut



zzgl. Nutmutter / *add. nut 844-322. ...*

SMS Gewinde-Schlauchstutzen / SMS male coupling

SMS Bund-Schlauchstutzen / SMS female coupling

1.4404

DN	G DIN 405-Rd	L / L1 mm	E mm	Art.-Nr.	D mm	L / L1 mm	Art.-Nr.
1"	40x1/6"	64/21	25	844-135.025025	35,5	64/21	844-235.025025
1-1/2"	60x1/6"	64/21	38	844-135.038038	55,0	64/21	844-235.038038
2"	70x1/6"	72/22	51	844-135.051051	65,0	72/22	844-235.051051
2-1/2"	85x1/6"	88/24	63	844-135.063063	80,0	88/24	844-235.063063
3"	98x1/6"	109/41	76	844-135.076076	93,0	109/41	844-235.076076
4"	132x1/6"	149/40	102	844-135.102102	127,0	149/40	844-235.102102

weitere Abmessungen auf Anfrage / other sizes on request

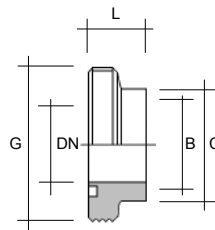
SMS VERSCHRAUBUNG SMS 1145
SMS UNION Swedish Manufacturing Standard

OBERFLÄCHEN Ra < 0,8/1,6 µm innen/außen = Hygieneklasse H3

SURFACES Ra < 0,8/1,6 µm internal/external = hygienic class H3



Vorschweiß-Gewinde-
und Bundstutzen
weld male part
and weld female part

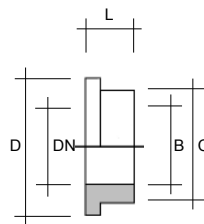


SMS Gewindestutzen / SMS male part

1.4404

für Rohr ISO 2037 / for tube ISO 2037

DN	G DIN 405-Rd	L mm	B / C mm	Art.-Nr.
1"	40x1/6"	15	22,6/25,0	844-915.025025
1-1/2"	60x1/6"	20	35,6/38,0	844-915.038038
2"	70x1/6"	20	48,6/51,0	844-915.051051
2-1/2"	85x1/6"	24	60,3/63,5	844-915.063063
3"	98x1/6"	24	72,9/76,0	844-915.076076
4"	132x1/6"	35	97,6/101,6	844-915.102102



zzgl. Nutmutter / add. nut 844-322. ...

SMS Bundstutzen / SMS female part

1.4404

für Rohr ISO 2037 / for tube ISO 2037

DN	D mm	L mm	B / C mm	Art.-Nr.
1"	35,5	8	22,6/25,0	844-916.025025
1-1/2"	55,0	9	35,6/38,0	844-916.038038
2"	65,0	9	48,6/51,0	844-916.051051
2-1/2"	80,0	9	60,3/63,5	844-916.063063
3"	93,0	10	72,9/76,0	844-916.076076
4"	127,0	12	97,6/101,6	844-916.102102

weitere Abmessungen auf Anfrage / other sizes on request