

# DAMPF SCHLAUCH VERSCHRAUBUNG EN 14423 (DIN 2826) STEAM HOSE COUPLING

Sicherungsbundstutzen geschuppt / serrated hose shank with collar

<b>BETRIEBSDRUCK</b>	1,8 MPa (18 bar)
<b>EINBAND</b>	Dampf Sicherheits Klemmschalen 1.4401 EN 14423
<b>TEMPERATUR</b>	+210°C Sattdampf +120°C Heißwasser
<b>DICHTUNG</b>	PTFE
<b>WORKING PRESSURE</b>	1,8 MPa (18 bar)
<b>ASSEMBLING</b>	Steam safety clamps 1.4401 EN 14423
<b>TEMPERATURE</b>	+210°C saturated steam +120°C hot water
<b>GASKET</b>	PTFE



Vaterteil / male threaded screw coupling				Mutterteil / female threaded screw coupling		
Stahl galv. / steel galv. 1.0718						
DN	Schlauch Außen ø hose outer dia.	G BSPT	Art.-Nr.	Schlauch Außen ø hose outer dia.	G BSPP	Art.-Nr.
13x6	24-26	R 1/2"	800-401.013004	24-26	G 1/2"	800-411.013004
13x6	24-26	R 3/4"	800-401.013006	24-26	G 3/4"	800-411.013006
19x7	32-34	R 3/4"	800-401.019006	32-34	G 3/4"	800-411.019006
19x7	32-34	R 1"	800-401.019008	32-34	G 1"	800-411.019008
25x7,5	39-41	R 1"	800-401.025008	39-41	G 1"	800-411.025008
25x7,5	39-41	R 1-1/4"	800-401.025010	39-41	G 1-1/4"	800-411.025010
32x8	47-50	R 1-1/4"	800-401.032010	47-50	G 1-1/4"	800-411.032010
38x8	53-56	R 1-1/2"	800-401.038012	53-56	G 1-1/2"	800-411.038012
50x9	67-69	R 2"	800-401.050016	67-69	G 2"	800-411.050016

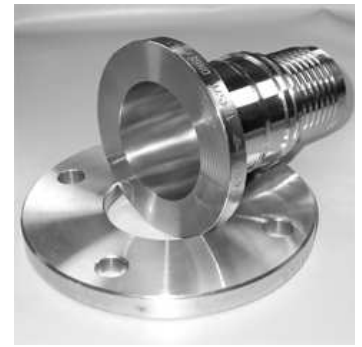
Vaterteil / male threaded screw coupling				Mutterteil / female threaded screw coupling		
Edelstahl / stainless steel 1.4301						
DN	Schlauch Außen ø hose outer dia.	G BSPT	Art.-Nr.	Schlauch Außen ø hose outer dia.	G BSPP	Art.-Nr.
13x6	24-26	R 1/2"	800-402.013004	24-26	G 1/2"	800-412.013004
13x6	24-26	R 3/4"	800-402.013006	24-26	G 3/4"	800-412.013006
19x7	32-34	R 3/4"	800-402.019006	32-34	G 3/4"	800-412.019006
19x7	32-34	R 1"	800-402.019008	32-34	G 1"	800-412.019008
25x7,5	39-41	R 1"	800-402.025008	39-41	G 1"	800-412.025008
25x7,5	39-41	R 1-1/4"	800-402.025010	39-41	G 1-1/4"	800-412.025010
32x8	47-50	R 1-1/4"	800-402.032010	47-50	G 1-1/4"	800-412.032010
38x8	53-56	R 1-1/2"	800-402.038012	53-56	G 1-1/2"	800-412.038012
50x9	67-69	R 2"	800-402.050016	67-69	G 2"	800-412.050016

weitere Abmessungen auf Anfrage / other sizes on request

# DAMPF SCHLAUCH FLANSCHVERBINDUNG EN 14423 (DIN 2826) STEAM HOSE COUPLING

Sicherungsbundstutzen geschuppt / serrated hose shank with collar

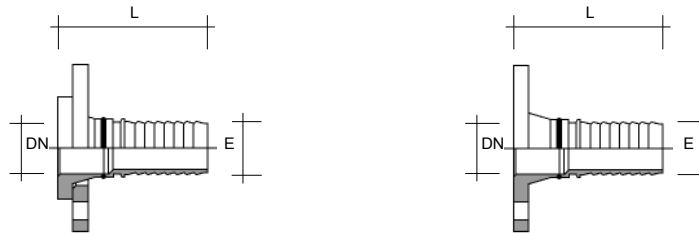
- BETRIEBSDRUCK** 1,8 MPa (18 bar)
- EINBAND** Dampf Sicherheits Klemmschalen 1.4401 EN 14423
- TEMPERATUR** +210°C Sattdampf  
+120°C Heißwasser
- WORKING PRESSURE** 1,8 MPa (18 bar)
- ASSEMBLING** Steam safety clamps 1.4401 EN 14423
- TEMPERATURE** +210°C saturated steam  
+120°C hot water



Losflansch  
swivel flange



Festflansch  
fixed flange



Stahl galv. 1.0718 steel galv.		PN 10-16		PN 25-40	
		Losflansch / swivel flange	Festflansch / fixed flange	Losflansch / swivel flange	Festflansch / fixed flange
DN	Schlauch Außen ø hose outer dia.	Art.-Nr.	Art.-Nr.	Art.-Nr.	Art.-Nr.
15	24-26	800-481.015016	800-491.015016	800-481.015040	800-491.015040
20	32-34	800-481.020016	800-491.020016	800-481.020040	800-491.020040
25	39-41	800-481.025016	800-491.025016	800-481.025040	800-491.025040
32	47-50	800-481.032016	800-491.032016	800-481.032040	800-491.032040
40	53-56	800-481.040016	800-491.040016	800-481.040040	800-491.040040
50	67-69	800-481.050016	800-491.050016	800-481.050040	800-491.050040

Edelstahl 1.4301 stainless steel		PN 10-16		PN 25-40	
		Losflansch / swivel flange	Festflansch / fixed flange	Losflansch / swivel flange	Festflansch / fixed flange
DN	Schlauch Außen ø hose outer dia.	Art.-Nr.	Art.-Nr.	Art.-Nr.	Art.-Nr.
15	24-26	800-482.015016	800-492.015016	800-482.015040	800-492.015040
20	32-34	800-482.020016	800-492.020016	800-482.020040	800-492.020040
25	39-41	800-482.025016	800-492.025016	800-482.025040	800-492.025040
32	47-50	800-482.032016	800-492.032016	800-482.032040	800-492.032040
40	53-56	800-482.040016	800-492.040016	800-482.040040	800-492.040040
50	67-69	800-482.050016	800-492.050016	800-482.050040	800-492.050040

Flansch / flange

EN 1092-1/04A  
(DIN 2673, 2674, 2634, 2635)

weitere Abmessungen auf Anfrage / other sizes on request

# DAMPF SICHERHEITS KLEMMSCHALEN EN 14423 (DIN 2826)

## STEAM SAFTY CALMPS

für Schlauchstutzen mit Sicherungsbund / for hose shank with collar

**EIGENSCHAFTEN** hervorragende Festigkeitseigenschaften  
einfache Montage  
kostengünstig durch Wiederverwendbarkeit

**BETRIEBSDRUCK** 1,8 MPa (18 bar)

**TEMPERATUR** +210°C Sattedampf  
+120°C Heißwasser

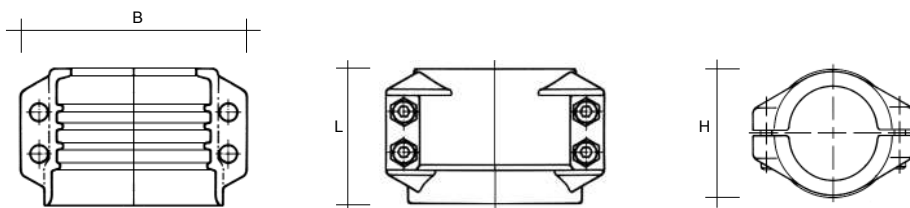
**ZUBEHÖR** Schrauben EN ISO 4762 (DIN 912) 1.4301  
Muttern EN ISO 4032 (DIN 934) 1.4301  
gehören zum Lieferumfang

**FEATURES** *excellent mechanical property*  
*easy assembling*  
*cost saving by reusability*

**WORKING PRESSURE** 1,8 MPa (18 bar)

**TEMPERATURE** +210°C *saturated steam*  
+120°C *hot water*

**ACCESS** bolts EN ISO 4762 (DIN 912) 1.4301  
nuts EN ISO 4032 (DIN 934) 1.4301  
are included



### Dampf Sicherheits Klemmschalen / steam safety clamps EN 14423 (DIN 2826)

#### Edelstahl / stainless steel 1.4401

DN	Schlauchmaß hose size mm	Schlauch Außen ø hose outer dia. mm	H mm	B mm	L mm	Schrauben/Muttern bolts/nuts	Art.-Nr.
13	13x6	24-26	35	50	65	4/M6x20	810-015.013006
19	19x7	32-34	44	67	65	4/M8x25	810-015.019007
25	25x7,5	39-41	50	75	65	4/M8x25	810-015.025007
32	32x8	47-50	50	75	65	4/M8x25	810-015.032008
38	38x8	52-56	65	100	90	4/M10x40	810-015.038008
50	50x9	67-69	80	110	100	4/M10x40	810-015.050009

weitere Abmessungen auf Anfrage / other sizes on request