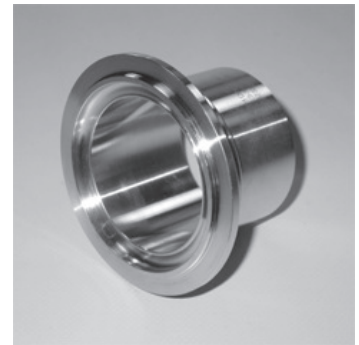
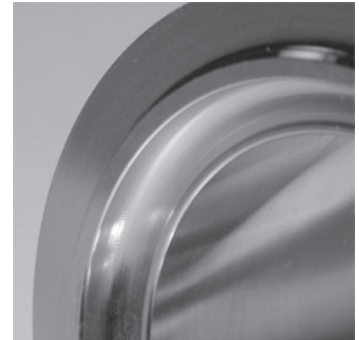


ASEPTIK-VORSCHWEISS-KLEMMSTUTZEN DIN 11864-3 / Form A

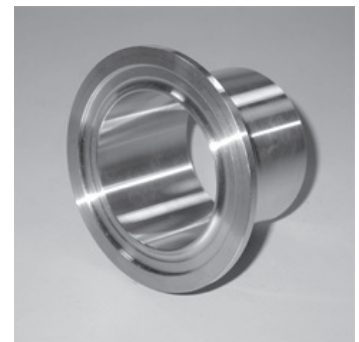
Nut-Klemmstutzen					Bund-Klemmstutzen			
zzgl. Klammer 848-922. ...								
DIN 11864-3 / Form A für Rohr DIN 11866 / Reihe A								
Art.-Nr.	849-691. ...	1.4404 Ra<0,8µm*			849-692. ...	1.4404 Ra<0,8µm*		
	849-791. ...	1.4435 Ra<0,4µm*			849-792. ...	1.4435 Ra<0,4µm*		
DN	Art.-End-Nr.	D mm	L 1 mm	B/C mm	Art.-End-Nr.	D mm	L 2 mm	B/C mm
10	010010	34,0	39,5	10/13	010010	34,0	38,0	10/13
15	015016	34,0	39,5	16/19	015016	34,0	38,0	16/19
20	020019	50,5	39,5	20/23	020019	50,5	38,0	20/23
25	025025	50,5	40,5	26/29	025025	50,5	38,5	26/29
32	032032	50,5	45,5	32/35	032032	50,5	44,0	32/35
40	040038	64,0	45,5	38/41	040038	64,0	44,0	38/41
50	050051	77,5	46,0	50/53	050051	77,5	44,5	50/53
65	065063	91,0	58,0	66/70	065063	91,0	56,5	66/70
80	080076	106	60,0	81/85	080076	106	58,5	81/85
100	100102	130	61,5	100/104	100102	130	60,0	100/104
ISO - DIN 11864-3 / Form A für Rohr DIN 11866 / Reihe B								
Art.-Nr.	849-693. ...	1.4404 Ra<0,8µm*			849-694. ...	1.4404 Ra<0,8µm*		
	849-793. ...	1.4435 Ra<0,4µm*			849-794. ...	1.4435 Ra<0,4µm*		
10	010010	34,0	39,5	14,0/17,2	010010	34,0	38,0	14,0/17,2
15	015016	34,0	40,5	18,1/21,3	015016	34,0	38,0	18,1/21,3
20	020019	50,5	40,5	23,7/26,9	020019	50,5	38,0	23,7/26,9
25	025025	50,5	45,5	29,7/33,7	025025	50,5	38,5	29,7/33,7
32	032032	64,0	45,5	38,4/42,4	032032	64,0	44,0	38,4/42,4
40	040038	64,0	46,5	44,3/48,3	040038	64,0	44,0	44,3/48,3
50	050051	91,0	58,5	56,3/60,3	050051	91,0	44,5	56,3/60,3
65	065063	106	60,0	72,1/76,1	065063	106	56,5	72,1/76,1
80	080076	119	61,5	84,3/88,9	080076	119	58,5	84,3/88,9
100	100102	130	62,0	109,7/114,3	100102	130	59,5	109,7/114,3
ASME - DIN 11864-3 / Form A für Rohr DIN 11866 / Reihe C								
Art.-Nr.	849-695. ...	1.4404 Ra<0,8µm*			849-696. ...	1.4404 Ra<0,8µm*		
	849-795. ...	1.4435 Ra<0,4µm*			849-796. ...	1.4435 Ra<0,4µm*		
1/2"	013013	34,0	39,5	9,4/12,7	013013	34,0	38,0	9,4/12,7
3/4"	019019	34,0	39,5	15,8/19,0	019019	34,0	38,0	15,8/19,0
1"	025025	50,5	40,0	22,2/25,4	025025	50,5	38,5	22,2/25,4
1-1/2"	038038	64,0	45,5	34,8/38,0	038038	64,0	44,0	34,8/38,0
2"	051051	77,5	46,0	47,5/50,8	051051	77,5	44,5	47,5/50,8
2-1/2"	063063	91,0	59,0	60,3/63,5	063063	91,0	57,5	60,3/63,5
3"	076076	106	60,0	72,9/76,1	076076	106	58,5	72,9/76,1
4"	102102	130	61,0	97,4/101,6	102102	130	59,5	97,4/101,6
O-Ringe								
DIN		ISO		ASME		Materialien		
DN	d1xd2 mm	DN	d1xd2 mm	DN	d1xd2 mm	NBR, EPDM FPM, VMQ, PTFE		FEP - VMQ FEP - FKM
10	12x3,5	10	16x3,5	1/2"	12x3,5			
15	18x3,5	15	20x3,5	3/4"	18x3,5			
20	22x3,5	20	26x3,5	1"	24x3,5			
25	28x3,5	25	32x5	1-1/2"	37x5			
32	34x5	32	40,5x5	2"	50x5			
40	40x5	40	46,5x5	2-1/2"	62x5			
50	52x5	50	58,5x5	3"	75x5			
65	68x5	65	73,5x5	4"	100x5			
80	83x5	80	86,5x5					
100	102x5	100	111x5					
* produktberührende Flächen / weitere Abmessungen auf Anfrage								



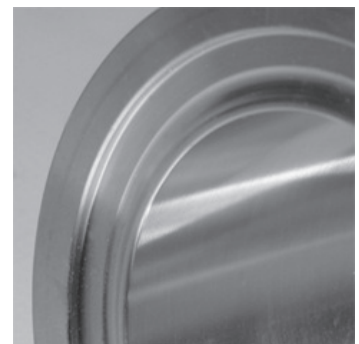
Vorschweiß-Nut-Klemmstutzen



Detail Nut-Klemmstutzen



Vorschweiß-Bund-Klemmstutzen



Detail Bund-Klemmstutzen



Anschweiß-Klemmstutzen

INHALT

SCHLÄUCHE
LEBENSMITTEL

SCHLÄUCHE
INDUSTRIE

ARMATUREN

DICHTUNGEN
HALBZEUGE

DICHTUNGEN
EINBAUFERTIG

PROFILE

ANHANG